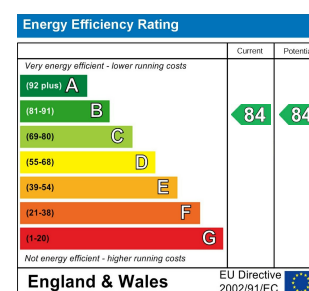
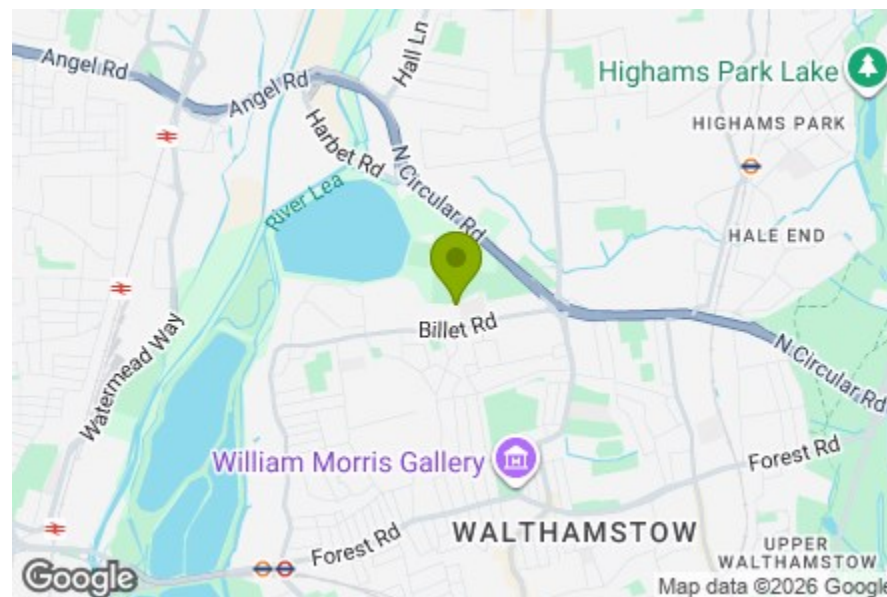




Total Area: 74.8 m² ... 805 ft² (excluding balcony)
All measurements are approximate and for display purposes only



THORNBURY WAY, WALTHAMSTOW

Offers In Excess Of £375,000 Leasehold
2 Bed Apartment - Purpose Built



Features:

- Two Bedroom Flat
- Second Floor
- No Chain
- Utility / Storage Room
- Communal Gardens & Playground
- 805 sqft
- Private Balcony

Set on the second floor of a modern development in Walthamstow, this spacious two bedroom apartment is offered with no onward chain and enjoys a private balcony alongside generously arranged interiors. Blackhorse Road, local shops, cafés and open green spaces are all within easy reach.

E11, E7, E12 & E15
hello11@stowbrothers.com
0203 397 2222

E4 & N17
hello4@stowbrothers.com
0203 369 6444

E17 & E10
hello17@stowbrothers.com
0203 397 9797

E18 & IG8
hello18@stowbrothers.com
0203 369 1818

E8, E9, E5, N16, E3 & E2
hellohackney@stowbrothers.com
0208 520 3077

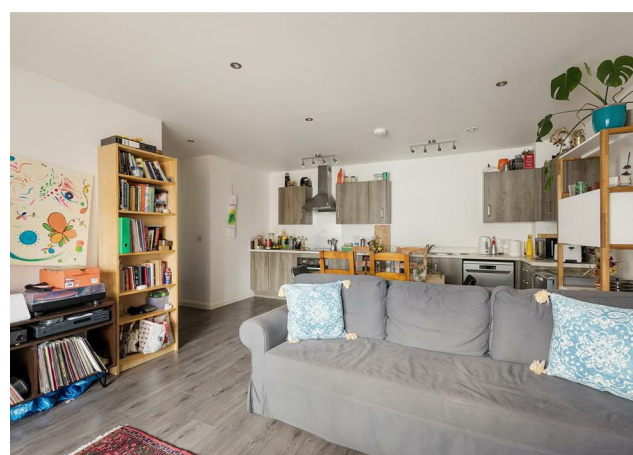
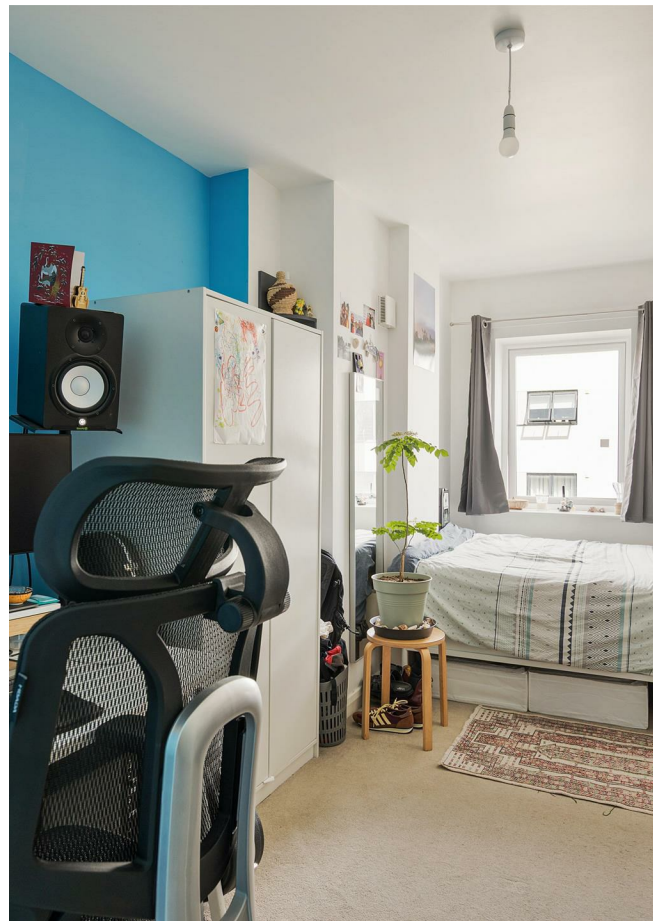
New Homes
newhomes@stowbrothers.com
0203 325 7227

Investment & Development
id@stowbrothers.com
0208 520 6220

Property Maintenance
propertymanagement@stowbrothers.com
0203 325 7228

STOWBROTHERS.COM
@STOWBROTHERS

REQUEST A VIEWING
0203 397 9797



IF YOU LIVED HERE...

Step inside and the hallway leads through to a generous open plan kitchen, dining and reception room. The kitchen sits neatly along one wall, leaving ample space for a dining table as well as a comfortable seating area. Wide doors draw in plenty of natural light and open directly onto the private balcony, creating an easy connection between inside and out. It's a lovely spot for morning coffee or a little fresh air at the end of the day.

Both bedrooms sit separately from the living space, giving the apartment a practical sense of balance. The principal bedroom is an impressive double with fitted wardrobes tucked behind sliding doors, while the second bedroom is another well proportioned room that works equally well as a guest bedroom, home office or study, depending on your needs. The bathroom is generously sized and finished in contemporary style, with a bath and overhead shower, while useful hallway storage helps keep day-to-day living organised.

With its thoughtful layout, private outdoor space and generous proportions throughout, this is a home that will appeal to first-time buyers, professionals and anyone looking for an easy move in a well-connected part of Walthamstow.

WHAT ELSE?

- Blackhorse Road station is within easy reach, offering Victoria line and Overground services for straightforward journeys into central London and across the city.

- The ever-popular Blackhorse Beer Mile is nearby, where you'll find independent favourites including Signature Brew, Exale Brewing and Big Penny Social, alongside great places to eat and meet friends.

- Walthamstow Wetlands is close by for waterside walks and wildlife, while Lloyd Park offers open green space, tennis courts, the William Morris Gallery and a popular Saturday farmers' market.



WORD FROM THE EXPERT...

"I love living in Walthamstow – it's got such a great mix of things going on. Saturdays are my favourite, with the market in Lloyd Park full of fresh food, handmade bits, and plenty of friendly faces. The new Soho Theatre has brought amazing shows right to our doorstep, and if I fancy a pint, the Blackhorse Beer Mile breweries are perfect for a wander. When I need some fresh air, the Walthamstow Wetlands are just a short stroll away – all that greenery makes you completely forget you're in London. Plus, with brilliant transport links, it's so easy to hop on the Tube or Overground and be in Central London in no time at all".

WILLIAM JACKSON
E17 ASSISTANT BRANCH MANAGER

REQUEST A VIEWING
0203 397 9797

FOLLOW US → @STOWBROTHERS
STOWBROTHERS.COM